

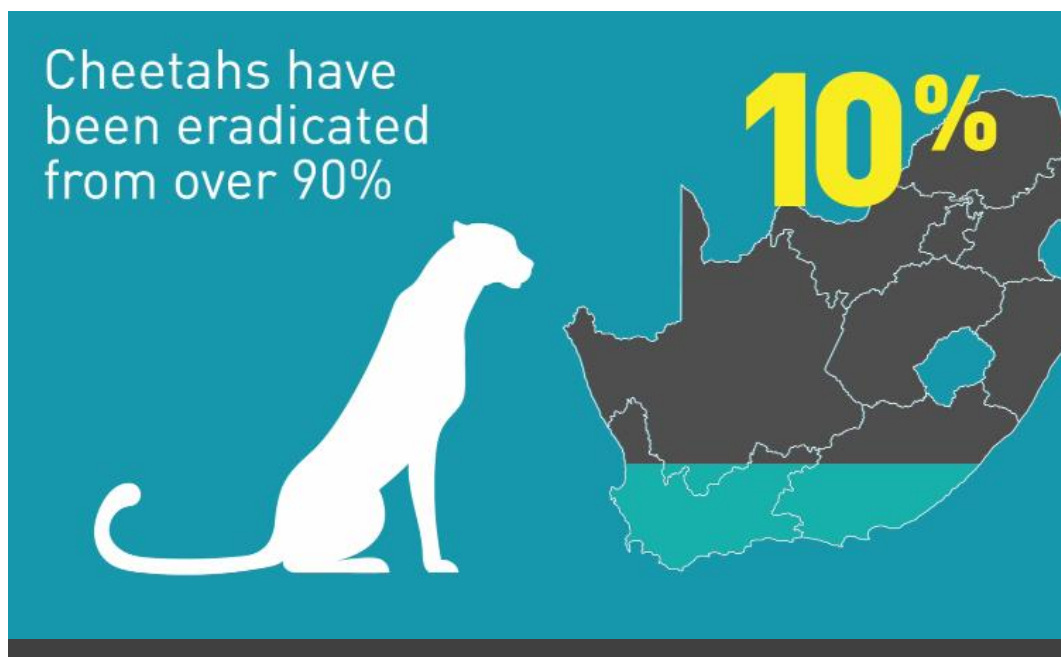


What does the Red List revision mean for South African mammals?

15 December 2017

Start

This year, the Endangered Wildlife Trust has run a very special campaign, sharing our Mammal of the Week on our website and social media every Thursday since 26 January. The collection of assessments on which this campaign was based, the 2016 Red List of Mammals of South Africa, Lesotho and Swaziland, has now been finalised in its entirety and can be accessed [here](#).



CLICK HERE TO PLAY THE VIDEO

So rather than sharing just one Mammal of the Week with you today, we're sharing a short video instead, which encapsulates some of the good news and some of the not-so-good news we've found out while assessing the status of the mammals in our region. You can find out more by visiting our [website](#).

We hope you've enjoyed the Mammal of the Week campaign as much as we enjoyed sharing these incredible species with you. The 2016 Red List of Mammals of South Africa, Lesotho and Swaziland was funded via the South African National Biodiversity Institute (through a grant by the Norwegian Government that aims to build capacity in the southern Africa region for undertaking assessments), the Endangered Wildlife Trust, the Department of Environmental Affairs, E Oppenheimer & Son and De Beers Group of Companies.

End

Contacts

Dr Harriet Davies-Mostert
Head of Conservation
Endangered Wildlife Trust
Tel: +27 87 021 0398
harrietd@ewt.org.za

Belinda Glenn
Marketing and Communications Manager
Endangered Wildlife Trust
Tel: +27 87 021 0398
belindag@ewt.org.za